



**CUSTOMER:** \_\_\_\_\_ **DATE:** \_\_\_\_\_

**CONTACT:** \_\_\_\_\_ **PHONE:** \_\_\_\_\_ **FAX:** \_\_\_\_\_

### 1) APPLICATION

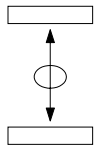
- INDOOR     OUTDOOR     MARINE ENVIRONMENT     MOBILE EQUIPMENT     OVERHEAD CRANE/HOISTING     CRANE CHAIR
- PORTABLE EQUIPMENT     FOOT PEDAL     OTHER \_\_\_\_\_

### 2) CONTROLLER SIZE & DURABILITY

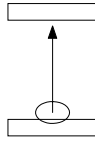
- MINIATURE: V10 H100 H7 V14 V20 S14     MEDIUM: V11 V8 D8
- SMALL: V5 VV5 S2 S21 S22 S23 S24 N6     LARGE: V3 V6 VV6 D64 DD64 K2

### 3) CONTROLLER FUNCTIONS

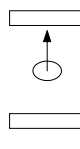
SINGLE AXIS (PICK 1 OF 3 ITEMS BELOW)



STANDARD BI-DIRECTIONAL

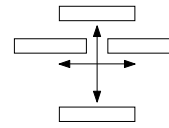


FULL TRAVEL UNI-DIRECTIONAL

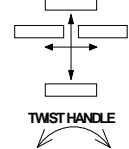


CENTER TO END UNI-DIRECTIONAL

DUAL AXIS



MULTI AXIS



### 4) SWITCH SPECIFICATIONS

LEFT HAND MOUNTING

- VOLTAGE \_\_\_\_\_ AC/DC    CURRENT \_\_\_\_\_ AMPS.  
 DIRECTION 1&2    DIRECTION 3&4  
 NUMBER OF CONTACTS \_\_\_\_\_    NUMBER OF CONTACTS \_\_\_\_\_  
 STEPLESS OR STEPS \_\_\_\_\_    STEPLESS OR STEPS \_\_\_\_\_
- SPRING RETURN     SPRING RETURN
  - FRICTION BRAKE     FRICTION BRAKE
  - POTENTIOMETER \_\_\_\_\_     POTENTIOMETER \_\_\_\_\_
  - ELECTRONICS     ELECTRONICS

RIGHT HAND MOUNTING

- VOLTAGE \_\_\_\_\_ AC/DC    CURRENT \_\_\_\_\_ AMPS.  
 DIRECTION 5&6    DIRECTION 7&8  
 NUMBER OF CONTACTS \_\_\_\_\_    NUMBER OF CONTACTS \_\_\_\_\_  
 STEPLESS OR STEPS \_\_\_\_\_    STEPLESS OR STEPS \_\_\_\_\_
- SPRING RETURN     SPRING RETURN
  - FRICTION BRAKE     FRICTION BRAKE
  - POTENTIOMETER \_\_\_\_\_     POTENTIOMETER \_\_\_\_\_
  - ELECTRONICS     ELECTRONICS

### 5) ELECTRONICS

#### A) VALVE SPECIFICATIONS

VALVE MANUFACTURE \_\_\_\_\_ MODEL NUMBER \_\_\_\_\_  
 SUPPLY VOLTS: \_\_\_\_\_ VDC    COIL RESISTANCE: \_\_\_\_\_ OHMS    THRESHOLD: \_\_\_\_\_ mA    MAX. OUTPUT \_\_\_\_\_ mA  
 SINGLE COIL     DUAL COIL     FLOW CONTROL     SWITCHES FOR DIRECTIONAL VALVES    PWM FREQUENCY: \_\_\_\_\_ Hz

#### B) SIGNAL OUTPUTS

SUPPLY VOLTS: \_\_\_\_\_ VDC     4-20mA     0-20mA     0-10V     -10V to +10V     OTHER \_\_\_\_\_

#### C) OPTIONS FOR BOTH

SINGLE MAX. (A ADJ.)     DUAL MAX. (A & B ADJ.)     DUAL RANGE \_\_\_\_\_ mA     RAMP TIME \_\_\_\_\_ SEC.

### 6) HANDLE TYPE

- STANDARD KNOB     MECHANICAL INTERLOCK     PUSHBUTTON DEADMAN     PUSH DEADMAN     PULL DEADMAN
- PALM HANDLE \_\_\_\_\_

### 7) NAMEPLATE SPECIFICATIONS

- STANDARD NAMEPLATE \_\_\_\_\_     SPECIAL NAMEPLATE (ATTACH LAYOUT DRAWING OR SPECIFICATIONS)

### 8) ENCLOSURE

- GENERAL PURPOSE     WEATHERPROOF     CORROSIVE RESISTANT (PLASTIC)     PORTABLE CONSOLES
- ENCLOSURE DIMENSIONS L= \_\_\_\_\_ W= \_\_\_\_\_ H= \_\_\_\_\_     TS1     TS2

### 9) NOTES

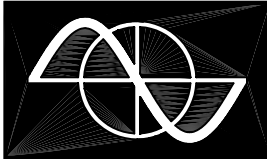
---



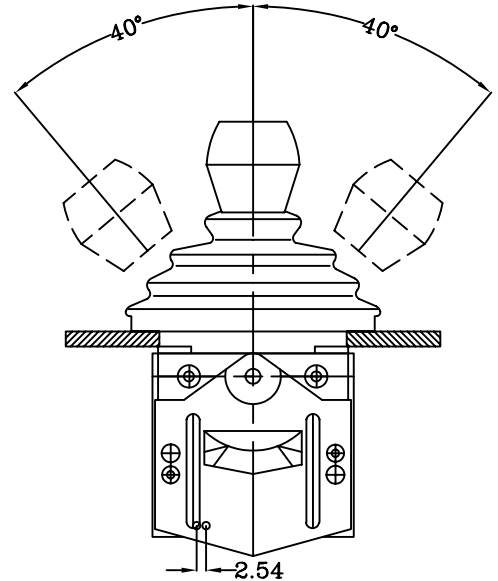
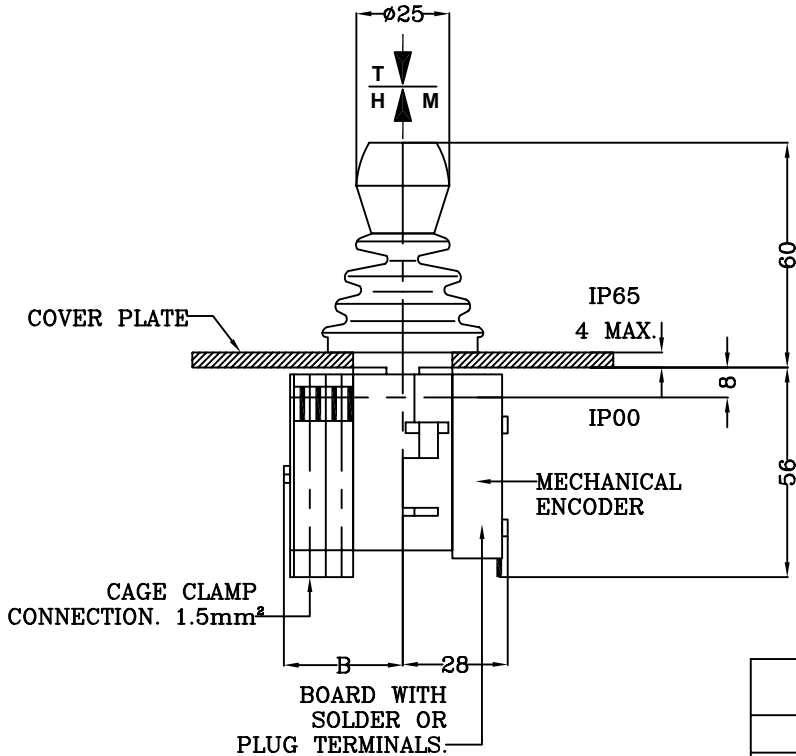
---



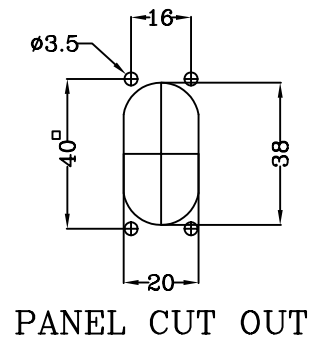
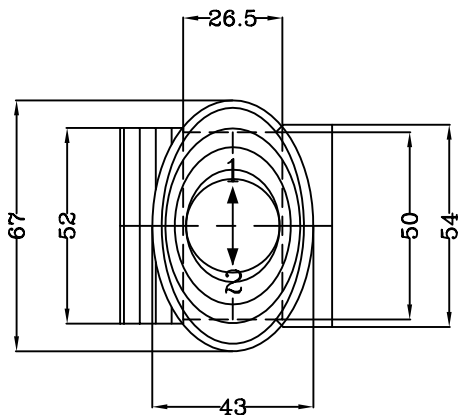
---



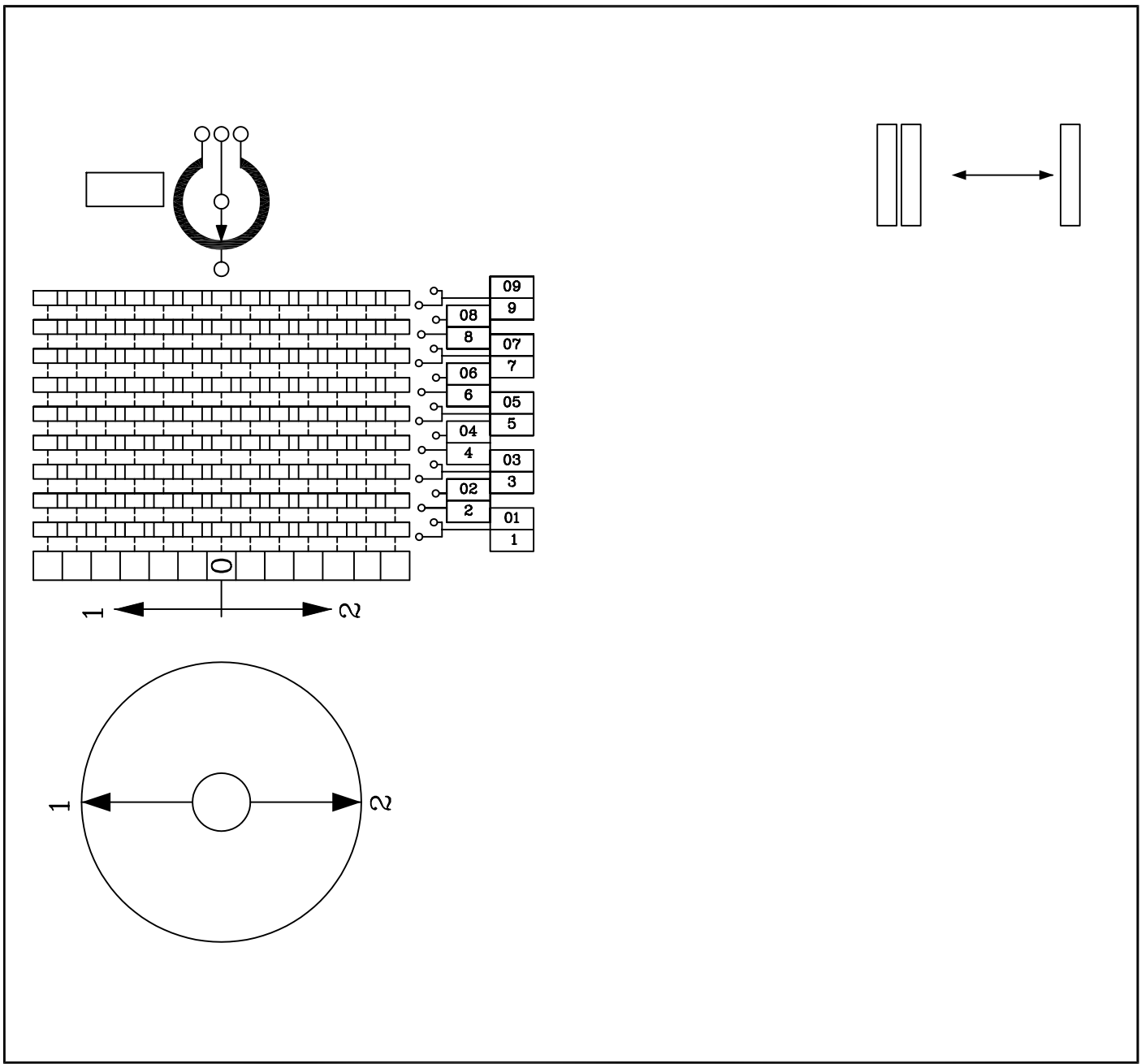
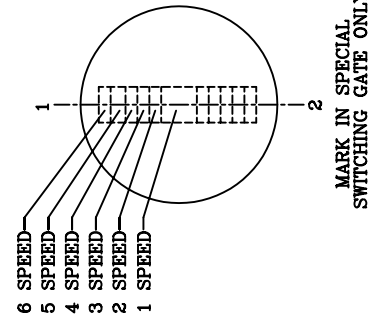
THE S14 IS A COMPACT MASTER SWITCH DESIGNED FOR PORTABLE APPLICATIONS.  
IT IS SMALL, LIGHTWEIGHT AND SOLID IN DESIGN.  
IT IS BUILT FOR 6 MILLION OPERATIONS.  
IT IS OIL, OZONE, UV AND SALT ATMOSPHERE (OCEAN CONDITION) RESISTANT.  
CONTACTS ARE RATED AT 2A 250V AC 15 RES. 1A 24V DC 13 DEGREE OF PROTECTION FRONT: IP65



TYPE	NO. OF CONTACTS	DIMENSION B
01	2	24
02	4	33
03	6	42



S14	S14-BASIC MASTER SWITCH
	X-STANDARD HANDLE
	T-DEAD MAN TO PRESS
	P-DEAD MAN TO PULL
	M-MECH. INTERLOCK IN 0 POSS.
	1-SWITCHING GATE #1 1
	4-SPECIAL SWITCHING GATE
	CONTACT ARR. DIR. 1-2
	A-Z-FROM SHEET 20.2.1
	O-SPECIAL CONTACT ARRANGEMENT
	X-IF NOT REQUIRED
	ENCODER WITH 5 x 10 <sup>6</sup> SWITCHING CYCLES
	0.5 WATTS. WIPER CURRENT 1ma.
	1-2-MEC 1-2 CONTACT 'N' PAGE 20.2.1
	COND. PLASTIC POT. 2 x 10K OHM
	1-7-MEC 1-7 CONTACT 'N+M'
	COND. PLASTIC POT. 2 x 5K OHM
	1-6-MEC 1-6 6 BIT GRAY CODE
	1-6-5-MEC 1-6-5 4-20ma. 24V DC
	1-6-8-MEC 1-6-8 0-20ma. 24V DC
	X-IF NOT REQUIRED
	1-M-STANDARD NAMEPLATE. SECT. 20.1
	X-IF NOT REQUIRED
	O-SPECIAL NAMEPLATE MARK IN CHART
	G-GENERAL PURPOSE ENCL.
	W-WEATHERPROOF ENCL.
	O-OPEN TYPE SWITCH



GESSMANN <b>S14 MASTER SWITCH</b>		JOB #
DATE:	FROM:	
NAME:		