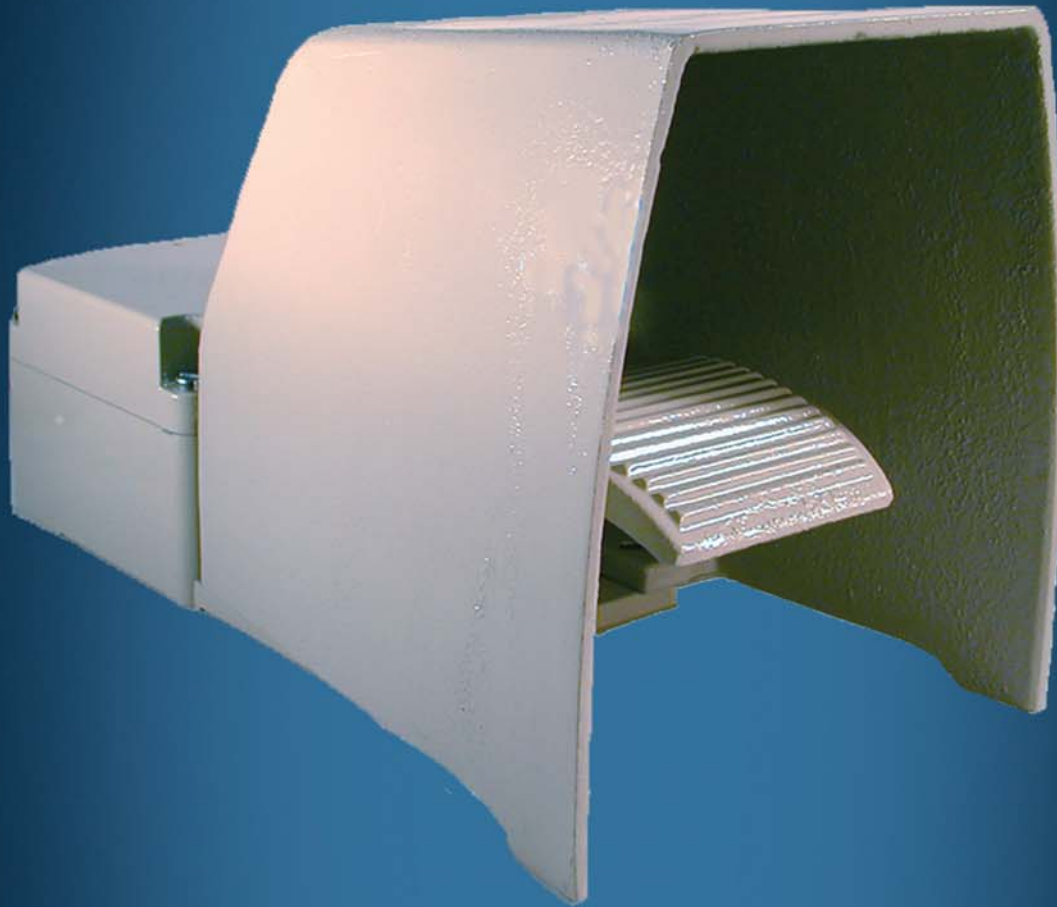


P8 / PP8 FOOT PEDAL



The foot pedal P 8 and PP 8 is a rugged switching devices to IEC/EN 60947-5-1, for footing applications.

Mechanical life	P8	6 million (operating cycles)
	PP8	10 million (operating cycles)
Permissible ambient temperature	Operation	-40° C to +60° C
	Storage	-50° C to +80° C
Degree of protection front	P8	IP 54 IEC / IEN 60529
	PP8	IP 65 IEC / IEN 60529

Contact complement 2A 250V AC 15 or 1A 24V DC 13

Wire-wound potentiometer linear resistance 1k, 2k, 4k, 10k

SENETT CONTROLS
 **GESSMANN** GROUP
Industrial Controllers

225 Admiral Blvd. Mississauga, On., L5T 2T3
Tel: 905.564.0167 Email: sales@senett.ca
Fax: 905.564.6633 Website: www.senett.ca